

OJIBWA PTO

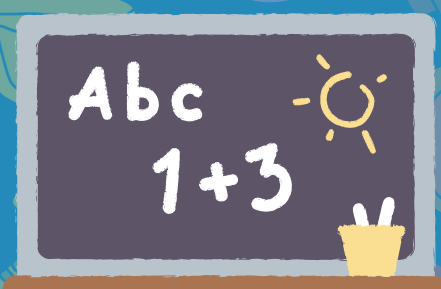
WHERE DOES THE MONEY GO?



GRADE LEVEL ALLOCATIONS

TOTAL EXPENSE: \$10,200

Each grade (K-5th) receives \$15/student x max class enrollment to use towards grade level activities to enrich their time at Ojibwa.
(Example, field trips)



TEACHER/SUPPORT STAFF ALLOCATIONS

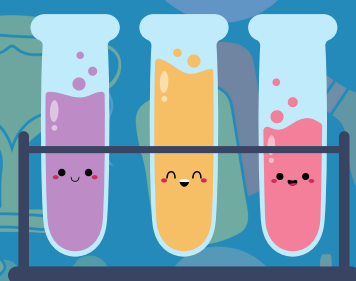
TOTAL EXPENSE: \$7,100

Each Ojibwa grade level teacher, specials teacher + support staff receives an allocation to purchase items to enrich their classroom.
(Examples, soft seating, name cards, etc.)

GRADE LEVEL & STAFF SHIRTS

TOTAL EXPENSE: \$6,500

Each student and staff member receives an Ojibwa grade level shirt to wear at school wide events or on field trips.



STUDENT ENRICHMENT

TOTAL EXPENSE: \$20,000

Funds used for programs or events like Field Day, Science Night, graduations, 5th Grade End of Year Party, Lego Robotics, & books to support our vending machine program

OPERATIONS

TOTAL EXPENSE: \$7,700

Funds used for Teacher/Staff Appreciation Week, school improvement funds, PTO Operations, Poster Maker, etc.



SOCIAL ACTIVITIES

TOTAL EXPENSE: \$18,500

We have a handful of social events at a low cost to our families each year. We usually break even with these events, but need to plan for them in our budget to ensure spend is managed. Examples: Family Bowling Night, Special Persons dance, Carnival, etc.

GO TEAM

We are so grateful we are able to have so many great programs for our families and staff! Every dollar we raise goes back to Ojibwa to give our students an amazing elementary school experience!

Thank you for your support this year!

Questions?
Come to our next PTO meeting!
Schedule can be found on the
[Ojibwa Website](#)

